

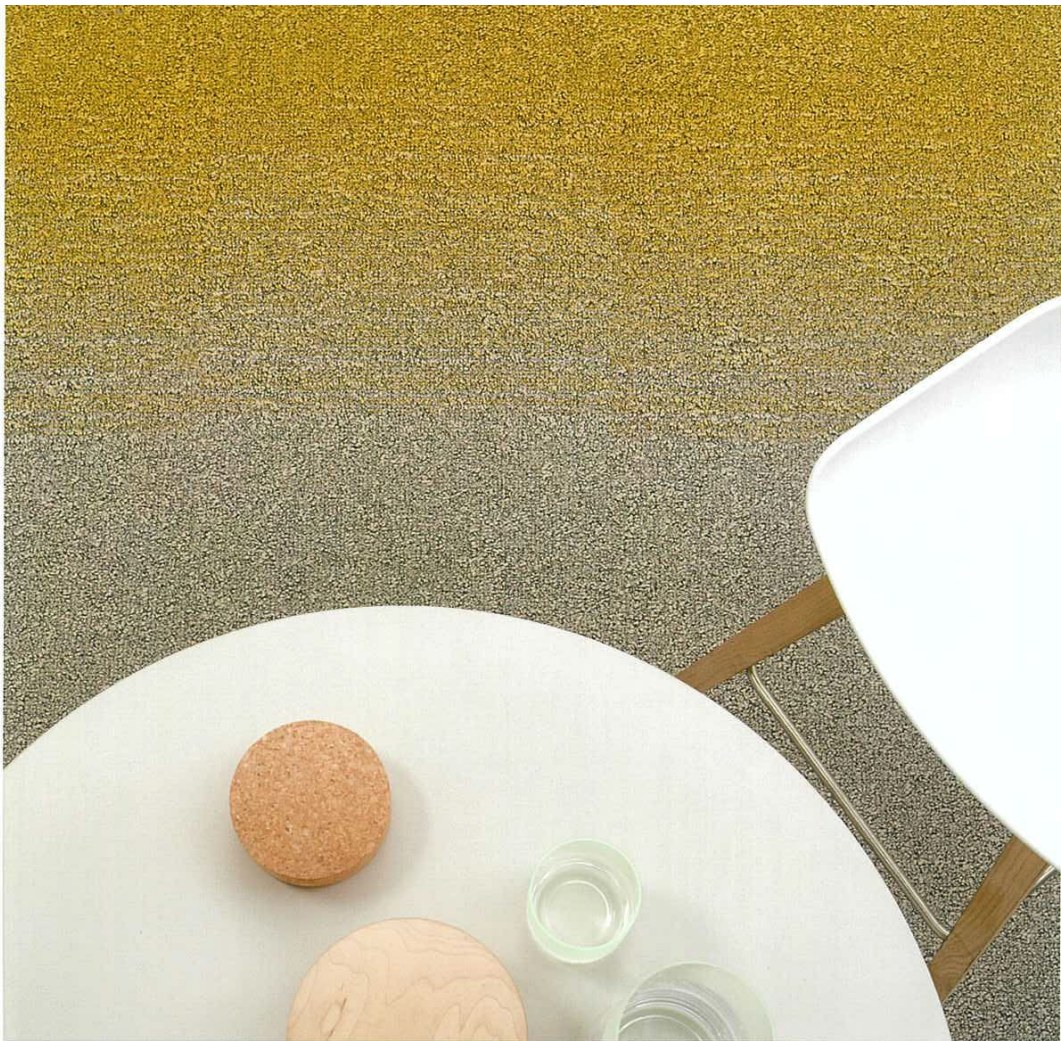


牆身佈置款式多元，由經典復古的幾何圖案、活潑可人的森林動物到唯美大方的金色點綴琳瑯滿目，配合風格各異的地板裝飾，往往賦予空間優雅與隨性的個性，本特輯精選一系列牆身、地面裝飾，務求帶給您粉飾靈感，為家居設下別具一格的背景主題。More than simply a means of dividing your interiors, the humble wall can easily be transformed into a blank canvas, allowing you to showcase your true personality through a vibrant range of papers, fabrics, paint or tiles. Besides, a critical component in any home, floor space is often overlooked as a creative canvas, however now, thanks to high-end technology and exquisite design, your flooring can resemble a work of art.

Text by Yoyo Chan & Melinda Earsdon

The Art of Wall and floor decor

牆身地板換新妝



時尚變奏

DESSO Fuse 系列地毯透過兩種鮮明對比的色調，營造不一樣的漸變色效果，系列共有八色選擇，分別有淨色及漸變色，設計則有長木地板及方磁磚，不同方式的湊合可令變奏的色澤多元化發展，同時可用以劃分細小或公共區域、為室內注入玩味設計，這創新的設計榮獲產品設計類別中的 2016 紅點設計獎，獨特的設計廣受大眾認同。（達明地板）

II A combination of two contrasting but complementary colour schemes in one inspirational flooring product, DESSO Fuse Create presents a whole new take on transition carpet tile effects. The result is so novel it has won the Red Dot Award: Product Design. In DESSO Fuse Create, the softer hues of Fuse and Fields range work together to help zone and divide large spaces, while making a design impact. A stunning addition to the Transitions, DESSO Fuse Create is available in eight colour options in both tiles and planks, allowing transitioning hues to work in several directions and in harmony with any setting. (Tat Ming Flooring)



異國風情

Travellers 系列以充滿心思的設計構想及花紋圖案，讓人踏上環遊世界之旅，感受西班牙巴利阿里海灘上如夢幻般的波西米亞風情，非洲熱帶叢林的絢爛神秘幻想。系列以藤枝及熱帶植物等天然物料為概念，純色調的牆紙設計可見世界各地的編織藝術，例如法式繩結編織、藤柳枝編工藝，突顯地道復古的氣息，同時又能展現時尚的風采。（達明牆紙）

II A surprising mix of designs and motifs takes you on a magical journey around the world, from the dreamy bohemian vibe on the Balearic beaches to the mysterious African jungle. The pure hues and materials are inspired by natural elements such as rattan and tropical plants. Authentic weaving techniques including macramé and wickerwork form the basis of this collection. The result is a vintage touch and a glamorous twist: authentic meets chic. (Tat Ming Wallpaper)

俏皮印花

似曾相識的葉子印花圖案，俏皮又帶點復古風，正是英國著名設計師 Orla Kiely 的手筆。「Orla Kiely」同名設計品牌攤毯，演繹出其經典標誌設計，將普普藝術結合植物元素如花朵、樹葉，盡顯 Orla Kiely 有趣靈活的創意，典雅圖案加上大膽強烈的色彩混搭，讓室內空間活潑起來，散發出英倫格調。（達明地板）

II Orla Kiely, the well-known Irish designer, brings together a modern, mid-century-inspired pattern and a hint of 1960's cool mixed with a comforting nostalgia into everyday 21st century life. Kiely interprets her creativity and turns organic elements like flowers and leaves into playful, retro but elegant graphic style. Based on her iconic stem and leaf prints, this signature collection draws from a deep-rooted passion of colour, pattern and rhythmic charm coupled with a desire for prints that make you smile and brighten up your interior with a touch of British style. (Tat Ming Flooring)



DESSO

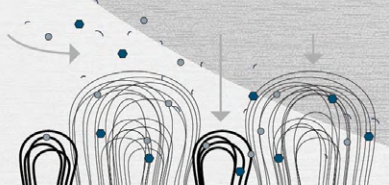
AirMaster®
Clears
the Air®

made in
the Netherlands

會過濾空氣
的地氈

PM_{2,5}

DESSO AirFilters™



- Fine dust (<10 µm)
- Coarser dust (>10 µm)



ECONYL®
ENDLESS POSSIBILITIES

Tarkett

TAT MING
FLOORING
達明地板

member of TAT MING Group
since 1981

橡木複合地板・纖維地板・膠地板・方塊氈・室內全鋪地毯・地毯・榻榻米



灣仔 陳列室
杜老誌道 6 號 群策大廈 16 樓全層
電話：2910 2268

星期一至六：10:00 am - 6:00 pm
星期日及公眾假期：休息



中環 概念店
荷里活道 54 號
電話：2735 6337

星期一至日：10:30 am - 7:00 pm



沙田 陳列室
鄉事會路 138 號
新城市中央廣場 HomeSquare 3 樓 343 號舖
電話：2412 0337

星期一至日：11:00 am - 9:00 pm



尖沙咀 陳列室
彌敦道 132 號
美麗華廣場 A 座 16 樓 1602室
電話：2167 8337

星期一至六：10:00 am - 6:00 pm
星期日：11:00 am - 6:00 pm
公眾假期休息

tatmingflooring.com

sales@tatming.com

tatmingflooring